

KEPPEL 209

Shown with
Urban Facade



from **\$326,417**

KEPPEL 209

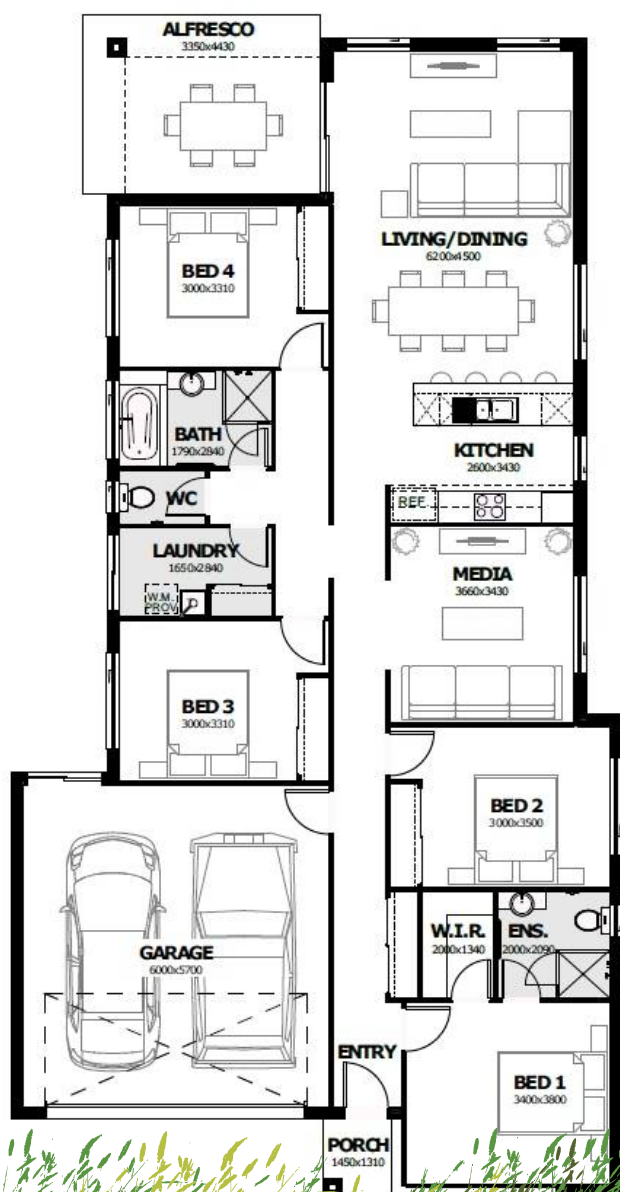
4 | 2 | 2

House Size: 208.14m²

Inclusions: Gold Inclusion Package*

Land: Choose from the great Lots at
McInnes Field, Laidley. (600 - 876m²)

* download the Gold Inclusions Package
Brochure for more details.



McInnes Field
at Laidley

LIVING AREAS	Living Room/ Dining Room	6200 x 4500mm
	Media Room	3660 x 3430mm
BEDROOMS	Master Bedroom	3400 x 3800mm
	Bedroom 2	3000 x 3500mm
	Bedroom 3	3000 x 3310mm
	Bedroom 4	3000 x 3310mm
OUTDOORS	Alfresco	3350 x 4430mm
	House	154.04 m ²
	Garage	37.36m ²
	Porch	1.09m ²
	Outdoor Living	14.84m ²
	TOTAL	208.14m²



All of these beautiful homes are
built by **EVoca** homes

EVoca homes is a privately owned and operated
building company with over 30 years' experience in
residential construction.